



BLUE RIDGE DISPATCHER

Vol. 23

June 2016

No. 6



(Photo by H. C. Willis)

Mr. Robin R. Shavers will present a slide show at the June meeting of the Blue Ridge Chapter NRHS. He's entitled it "Railroading Across America, Back In The Years". He will share with us images of American railroading from the 50's through the 90's. One fond memory many of us may have would be of Southern 4501, pictured here in Altavista in the mid 1970's. So, come on out and see if any of your railroad memories are rekindled.

Wednesday, June 8, 2016. 6:00 p.m.
Charley's Restaurant. 707 Graves Mill Rd. Lynchburg, VA



OFFICIAL PUBLICATION OF THE BLUE RIDGE CHAPTER
NATIONAL RAILWAY HISTORICAL SOCIETY
Lynchburg, Virginia



Blue Ridge Chapter, NRHS Minutes of Meeting – May 11, 2016

President Rick Johnson called the meeting to order at Charley's Restaurant at 7:31 p.m. Rick welcomed 21 members and 2 guests for a total of 23 in attendance. Guests were Dona Duvall and John Gardner. John Gardner paid his local dues and rejoined the Blue Ridge Chapter tonight. Rick asked that the reading of the minutes of the April 2016 minutes be dispensed. No corrections to the April minutes. The minutes of the April meeting were approved as published in the "Blue Ridge Dispatcher". Treasurer John Tanner then reported.

Old Business: Rick Johnson – No Report

New Business: Rick was told along with the rest of us that Warren Middleton fell and was recovering from the fall. Apparently Warren didn't break any bones. Rick announced that the VMT has an event coming up this coming weekend. Vice President's Report: Gale McKinley reported that she finally got the National membership roster. She was not sure that it was 100% accurate and will continue to monitor it. Gale was very disappointed with her findings. She reported that only 27 local BRC members plus 5 family members for a total of 32 paid National dues for 2016! By her estimate 23 Blue Ridge Chapter members may have not paid their 2016 National dues. The reason that she is not sure about who didn't renew their National dues is because some local BRC, NRHS members are also members of other NRHS chapters. She commented that she was going to send a letter to the members that didn't pay their 2016 National dues urging them to pay their National dues and the importance of doing so.

Gale shared the story of her latest cross country Amtrak vacation trip that she took her 88 year old father on. She and her dad took were gone for around two weeks. Gale said that her dad isn't a big train fan but that he did enjoy their trip together. They rode across America and back. They toured the California State Railroad Museum in Sacramento during one of their stops. She said that her dad loved that! He also enjoyed having the lower bed on their train. Gale was the one who had to crawl into the upper bunk each evening. She said that the wine that they enjoyed each evening helped her sleep! LOL!

Blue Ridge Chapter, NRHS National Representative: Bob Leslie reported on his recent trip to the National Representative's meeting in Cumberland, MD on April 22nd and 23rd, 2016. On Saturday, April 23rd Bob attended two three-hour meetings. There the National Representatives and the National officers discussed the current state and the future of the NRHS. Bob reported that there are between 6,500 and 7,000 paid up National members for 2016. Bob said that because of this positive National renewal count along with many volunteers the NRHS is in the black and all of their debt paid. There are no full or part-time paid NRHS employees. Past President Greg Molloy is no longer a NRHS member and National's ties with Fernley & Fernley are severed. The NRHS announced fourteen recipients of its annual NRHS Heritage Grants Program. The 2016 Grants total \$35,000 and are awarded to organizations such as historical societies, museums and NRHS Chapters. Rail Camp for both the East and the West is full. He recognized Roanoke Chapter National Representative Carl Jensen for being one of the major driving forces behind the continued success of Rail Camp. National officers are working on a revised definition of what a chapter is. BRC, NRHS Secretary Norris Deyerle asked Bob if someone has to be a paid up member of National in order to fill a local chapter's officer's seat. He said that he thought that the answer would be yes. Bob said that the NRHS slide collection is being cataloged in the Phillipsburg, NJ, Union Station basement. Joe Maloney is having talks with SMU and other libraries regarding preserving the massive NRHS slide collection. Wayland Moore thanked Bob for attending the National Representative meetings over the last few years.

Wayland acknowledged the fact that it takes time and money to do so. Norris Deyerle added that Bob was offered money in the past to help cover the expenses of attending these meetings on behalf of the BRC. Bob agreed that he was offered some monetary compensation in the past but that he had attended several meetings and had never turned in any expenses. Rick Johnson commented that he would get with Bob regarding past expenses.

Blue Ridge Chapter, NRHS Chairman of Virginia's Rail Heritage Region Partners: Norris Deyerle – No Report

Webmaster's Report: John Siegle – No Report

Editor's Report: Garland Harper – Absent – No Report

Closing Remarks: Rick Johnson thanked Editor Garland Harper for getting the newsletter out. He invited everyone back to our BRC "Fun Meeting" on Wednesday May 25, 2016. Invited everyone to stay and enjoy Kurt Reisweber's slide show for the evening.

50/50 Raffle Winner: Lloyd Lipscomb.

The business meeting was adjourned at 7:52 p.m.

Respectfully submitted, Norris Deyerle, BRC, NRHS Secretary

To be discussed at the June meeting - Blue Ridge Chapter members Lee Herbert, Lee Hawkins and Norris Deyerle have been in conversation with representatives of Liberty University about the possibility of installing an internet railcam on their campus. We'll talk about costs to the Chapter and other commitments that need to be made before we can proceed with the project. Be a part of the discussion and let's see if we can get Danville District, Norfolk Southern action at Lynchburg available on the information highway, as other locations around the nation have. **As a Blue Ridge Chapter member it is very important that you attend this meeting. Your vote will determine if this project moves forward.**" You may recall that LU had such a camera aimed at the new tunnel under the NS while it was under construction. That view provided great images of trains passing over the construction zone. It is hoped that this proposal will be useful to railfans far and wide and to LU security.

Blue Ridge Chapter, NRHS 2016 Calendar of Events
58th Anniversary of the Blue Ridge Chapter
A Virginia's Rail Heritage Region Partner
Compiled by Norris Deyerle
Blue Ridge Chapter, NRHS, Chairman of Virginia's Rail Heritage Region Partners
Newly updated or added events since last month printed in "Bold Italics".

Renew your NRHS membership on www.NRHS.com today! Good things are happening with the new and improved NRHS! Also log on to www.NRHS.com to see what the future holds for today's railroad preservation historical society! It's alive!

Vote "Yes" for a future Amtrak stop in the Town of Bedford, Va. also serving the Smith Mountain Lake area riders. It's easy and free! Go to www.thebedfordstation.com/petition

N&W Class J 611 2016 Excursion Schedule Info & Tickets: www.nctrans.org and www.FireUp611.org {VMT}. View the J 611 as she comes and goes through Roanoke at www.roanokerailcam.com! Listen to her crew's conversations with NS dispatchers on the app Broadcastify.com on your cell phone or www.broadcastify.com on your computer. Covers both Roanoke and Lynchburg, Virginia areas.

Notice: I urge our friends with the other railway historical groups and museums to take advantage of these two websites to promote your train show: <http://trc.trains.com/events.aspx> or <http://modelshopsusa.com/other/raillinks.php>. There is no cost to promote your train show on these websites. It's simple to add your event to their websites and your event approval is fast and efficient. These are websites that will help us all get the word out about our events!

JUNE 2016

06-8-16: {Wednesday} BRC, NRHS Regular Monthly Meeting, Mr. Robin R. Shavers Slide Presentation, "Railroading Across America, Back In The Years"

06-25-16: {Saturday} 13th North Carolina Rail Fair, Metrolina Expo Center, Building 1, Charlotte, NC. Info: www.gserr.com/shows.htm

06-26 thru 07-02-16: {Sunday – Saturday} NRHS RailCamp "East", Newark, DE

JULY 2016

07-13-16: {Wednesday} BRC, NRHS Regular Monthly Meeting, Fred Mayer Presentation TBD.

07-16 & 17-16: {Saturday & Sunday} Cass Scenic Railfan Weekend, The Mountain State Railroad & Logging Historical Association will be hosting a new photography venue in conjunction with a Durbin & Greenbrier Valley event. Courtesy of Ed Mayover via the "Trains News Wire". Info: www.msrlha.org

07-19 thru 24-16: {Tuesday – Sunday} NRHS "Rails to the Rockies" National Convention, Denver, CO. Info: <http://nrhs.com/content/2016-convention>

07-27-16: {Wednesday} BRC, NRHS "Fun Meeting", Matt Bell N&W Class J 611 Digital Presentation.

07-27-31-16: {Wednesday – Sunday} C&OHS 2016 Conference, In connection with the refurbishing of C&O H-6 No. 1309 for service on the Western Maryland Scenic Railroad out of Cumberland, Md. Ramada Inn in downtown Cumberland, Md. Room Reservations: 301-724-8800, C&OHS special room rate of \$99.00. Info: www.cohs.org

07-31 thru 08-07-16: {Sunday – Sunday} NRHS RailCamp "Northwest", Tacoma, WA.

AUGUST 2016

08-06-16: {Saturday} Virginia Train Collectors, Inc. Train Meet, Charlottesville, Va. The Charlottesville Elk's Lodge, 389 Elk Drive, Charlottesville, Va. 22911. {Just off Stony Point Road – Rt. 20N} 9:00 a.m. to 3:00 p.m. Adults \$5.00. Children 12 and under {with paying adult} admitted free. Contact Russell Youens {804} 342-6023 or email jyouens@verizon.net. Listing courtesy of Tom Riddle

08-10-16: {Wednesday} BRC, NRHS Regular Monthly Meeting – Gale McKinley Presentation featuring train stations and locomotives slides from '79 to '82 covering from New York to Texas. See famous locos such as the N&W 1776 and fallen flags such as the Katy!

08-13-16: {Saturday} 38th. Annual Lynchburg Rail Day 2016 presented by the Blue Ridge Chapter, NRHS, Air conditioned Boonsboro Ruritan Club, 1065 Coffee Road, State Route 644, Lynchburg, Va. 24503. For train show details or to rent a Vendor Table please contact LRD 2016 Chairman Barry Moorefield, rockdalefarm@live.com, LRD 2016 Table Registrar John Tanner, {434} 525-1318 or flytrains@yahoo.com, Or LRD 2016 Train Show Coordinator Norris Deyerle {434} 237-4912 or railcow@msn.com, View past Lynchburg Rail Day train shows at www.blueridgenrhs.org. The longest running model train show in Central Virginia. Each year has truly become a "family reunion" for area model train lovers! Enjoy operating layouts in different scales and more! Handicapped accessible facility!

SEPTEMBER 2016

09-14-16: {Wednesday} BRC, NRHS Regular Monthly Meeting

09-28-16: {Wednesday} BRC, NRHS "Fun Meeting"

OCTOBER 2016

10-12-16: {Wednesday} BRC, NRHS Regular Monthly Meeting – Kurt Reisweber Presentation

NOVEMBER 2016

11-06-16: {Sunday} 39th. Annual Gaithersburg Railroad – Steamship – Transportation Artifact Show and Sale and it's 11th. Annual Gaithersburg Model Train Show and Sale, Montgomery County Fairgrounds, Gaithersburg, MD. Info: www.gserr.com
11-09-16: {Wednesday} BRC, NRHS Regular Monthly Meeting – Wayland Moore Presentation
11-23-16: {Wednesday} ALERT! NO BRC, NRHS “FUN MEETING” DUE TO THE THANKSGIVING HOLIDAY

DECEMBER 2016

12-03-16: {Saturday} BRC, NRHS Annual Christmas Banquet, Prior reservations required, social hour starts at 6:00 pm. with no alcoholic beverages, Buffet meal following. Slide or PowerPoint railroading presentation rounds out the evening. Former Southern Railway Station, the current Altavista Area Chamber of Commerce, 414 Washington Street, Altavista, Va. 24517
Directions: www.altavistachamber.org/directions
12-14-16: {Wednesday} BRC, NRHS Regular Monthly Meeting
12-17-16: {Saturday} BRC, NRHS Kemper Street Station Holiday Gathering

“Lynchburg Rail Day 2016”, Saturday, August 13, 2016

Blue Ridge Chapter, NRHS Website: www.blueridgenrhs.org

Rails to Trails: High Bridge Trail State Park:

<http://www.dcr.virginia.gov/state-parks/hig.shtml>

<http://www.virginia.org/Listings/OutdoorsAndSports/HighBridgeTrailStatePark/>

<https://sites.google.com/site/friendsofhighbridgetrail/>

Historical USGS Topographical Maps: A great research tool for locating abandoned railroad lines, etc.

<http://nationalmap.gov/historical/>

Virginia Department of Rail and Public Transportation – Free Official State of Virginia Railroad Map, Write: 600 East Main Street, Richmond, Va. 23219

Phone: 804-786-4440 Website: www.drpt.virginia.gov

Rail Cam Suggested Viewing by Lee Hawkins: www.railserve.com has been on my suggested list for some time but BRC member Lee Hawkins noticed that a new location has been added. Log on to <http://www.railserve.com/RailCams/> You will see the Thomasville, NC rail cam located in downtown Thomasville, NC right on the Southern {NS} mainline.

Model Railroading:

High Bridge Railroad Club, Farmville, Va. Info: www.sites.google.com/site/hbrrclub

Modern Day Railroading:

Norfolk Southern and CSX Locomotives – The Diesel Shop, NS and CSX Loco rosters with professional quality photographs. The NS site includes NS Heritage locomotives. <http://www.thedieselshop.us/NS.HTML> &

<http://www.thedieselshop.us/CSX.HTML>

“Fallen Flag” railroads of local interest:

NEWEST ADDITION: Nelson & Albemarle Railway Historical Society, www.nelson-albemarle-railway-org

Franklin & Pittsylvania Railroad, The old “fast and perfect” railroad that ran between Gretna and Rocky Mount, Va.:

<http://www.fandprailroad.org>

Locomotive Search Tool And Railroad Photos Link: www.railbaron.rpicturearchives.net

Railroad Related Events Information: Visit: www.varailheritage.org, www.vmt.org, www.linkmuseum.org, www.nctrans.org, www.RoanokeNRHS.org, <http://nrhsrivanna.blogspot.com>, www.dcnrhs.org, www.odcnrhs.org, www.nwhs.org, www.cohs.org, www.csxthsociety.org, www.thecrhs.org, www.theruralretreatdepot.com, www.srha.org, www.rfandp.org, www.vatraincollectors.com, www.traincollectors.org, www.railroadcollectors.org, www.nhvry.org, www.norfolksouthernrhs.org, www.RailServe.com, www.qsmr.com, www.trains.com, www.TrainFinder.com, www.gserr.com, www.wqshow.com, www.drpt.virginia.gov, www.crewerailroadmuseum.org

Norfolk Southern/TVRM Steam Excursion Website: <http://www.21stcenturysteam.com> OR

<http://www.tvrail.com/pages/21st-century-steam>

Steam Train Events in the United States and Canada: www.diary.svsfilm.com

Steam Locomotive Locations: www.steamlocomotive.com

Railroad Historical Information and Related Photos: www.hawkinsrails.net

Railroad Photos: www.railsinvirginia.com, www.railfirephotography.com

Key Lock & Lantern Railroad History and Preservation Organization, www.klnl.org

Railroadiana Collectors Association, Inc. {RCAI}, www.railroadcollectors.org

Danville & Western Ry. Website: Railway operated in Southwestern Virginia between Danville and Stuart.

<http://southern-railway.railfan.net/dw/>

Trains & Travel International: www.traintrips.biz

Additional links to other NRHS Chapters, Railroad Historical Societies and Museums available at

www.blueridgenrhs.org

Virginia Museum Of Transportation Rail Cam: <http://www.nwhs.org/cam/vmt>

Roanoke, Va. Rail Cam: <http://www.roanokerailcam.com> {New 2016 Updated Address}

A Serendipitous Journey By Skip "Groundhog" Hansberry

When I learned my new vehicle had been delivered in northern Virginia, I faced the question of how to make the one-way trip there. Knowing how my wife felt about driving on the Beltway, I was not about to ask her to drive back alone. Why not Amtrak? Of course! I would have my friend George Hamlin pick me up at Manassas, I would spend the night with him and Kali, then George could ferry me over to Springfield the next morning to pick up the car.

I made my reservation with agent Harper and even plunked down an extra fifteen dollars to sample the new "business class" recently available on the Cardinal. I was curious as to what type of car was being utilized in this service and how deluxe it really was.

Friday, May 20 was departure day...the first thing I did that morning was to check #50's progress. It had not quite reached Charleston, just short of an hour and a half behind schedule. My hope was that with no additional delays and a generously padded schedule, it would not be grossly late arriving Charlottesville. I reminded myself that Wednesday's train had been four hours late, so it could be much worse.

The day was another cloudy-bright, showery one, but it seemed to improve somewhat as we neared Charlottesville. Jane dropped me off at the station just prior to 4:00, anticipating a departure time of about 4:15. There was a considerable gaggle of patrons waiting both inside and out.

My first observation was the new "traffic light" signal protecting the diamond on the Buckingham Branch. The next thing I noticed was the overwhelming aroma of fat emanating from the Wild Wing Café.



I watched the aforementioned signal display red for a few seconds, then go dark, then repeat this sequence several times. There was either a malfunction or severe indecision on the part of the dispatcher. As train time approached, I heard the roar of GE's, but it was old NS friend #211 heading for Lynchburg and points to the south. He crept over the diamond at no more than 20 mph.

They say that the only constant is change...certainly signs of change were evident everywhere on the former Southern route. The new vertical support was already in place, ready to replace the weary but still handsome cantilever standing south of the diamond. On the

ground lay the horizontal section, waiting for its day in the not-too-distant future.

About fifteen minutes after the NS cleared, the signal flashed red again and #50 rattled over the two NS tracks with P42 #190 leading a Viewliner baggage, Viewliner sleeper, business class coach, café-lounge, and three Amfleet coaches. Almost immediately NS Atlanta-Harrisburg container train #214 was heading north behind three ponies. Twenty minutes, three trains...not bad.

To expedite the process, the crew had the disembarking passengers exit from the lead coach and the entraining passengers board the last car. I was the only one hustling to the front to board the business class coach. This car had tables in the rear, an unstaffed service section in the middle, and eighteen seats arranged in a 2-1 configuration in the front. I confess that I have never ridden in a parlor car, but this seat was the most luxurious I have experienced: leg rests, great seat pitch, and a feel I can only describe as extremely "cushy". For a younger passenger on a long haul I think this seat could take the place of a sleeper without the excessive additional charge.



At 4:33, one hour thirteen minutes behind schedule, we eased out and crept through the small yard and past the cooling tower until we reached the bridge under I-64. Then we picked it up to about sixty, pacing or slightly pulling ahead of the traffic on parallel route 231 between Shadwell and Gordonsville. This was considerably faster than my previous ride over this stretch and the jointed rail still in place made for a decidedly rough ride.

I had asked Garland if he still knew any of the Cardinal crews from his many days spent long ago at Charlottesville. He said he wasn't certain...I should ask the conductor if he ever gets to Lynchburg. So I did when he came around to scan my ticket. His affirmative answer caused me to call Garland again and tell him the name "Hoffman". Garland responded quickly that he was the conductor on the cover of the national timetable a couple of years ago, pictured to the right.

There were quite a few covered hoppers at the Klockner plant just south of Gordonsville. This was doubtless one of the Buckingham Branch's better online customers.

About this time a man with a scanner and large NRHS patch on his shirt made his way through the car with some difficulty. I struck up a conversation. He asked if I were a member...my affirmative reply seemed to give him a great sense of relief. He said his name was Eisenberg and that he was a volunteer worker for the organization in Philadelphia. He added that if I called the NRHS phone number, he would be the one to answer the call.

Across the aisle a gentleman was looking curiously at the environs as we approached a small town. I mumbled that we were entering Gordonsville. The man appeared surprised, then said he had lived here as a child. I mentioned that there were some spectacular houses, really estates, near here, especially on the road between Gordonsville and Montpelier. He replied that he had been here because his father was employed as a tutor at the home of a family that owned a 5000-acre cattle farm.

I was happy to see the tower still standing, even though only used for storage. As we eased around the north leg of the wye to head for Orange I noted the vacant area where the sprawling station had stood when I passed through here more than forty years ago. I vaguely recall reading somewhere that over a century ago the locals would come out and sell food, particularly fried chicken, to the passengers here.

For the next ten miles I timed the mileposts at exactly 2:00, a paltry 30 mph. It didn't feel like much more than walking speed. Was this really 2016?

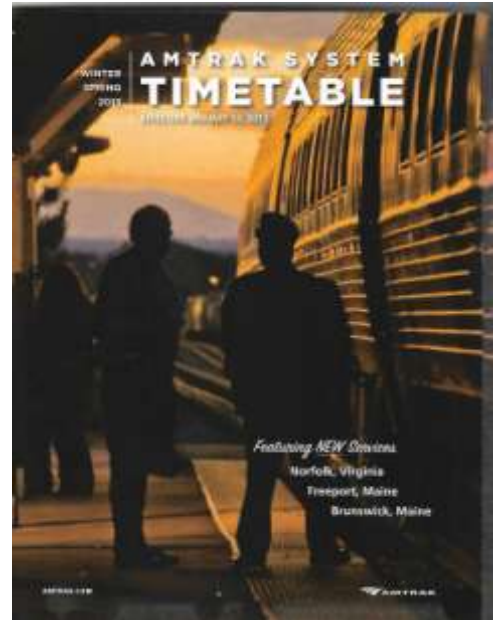
We finally reached Orange and the Southern welded rail, and not a bit too soon. In short order we were knocking off sub-minute miles. At some point I flagged down conductor Hoffman when he passed through. I told him I was going to be met by a friend who had taken the photo with him featured on the national timetable. He lit up and said he had always wondered who was responsible for his fifteen minutes of fame.

Soon we were slowing to stop at the venerable brick station in Culpeper. A handful off and on and we were on our way again. Mountain Run, Brandy Station, Elkwood, Remington...we passed places with names far greater than any ones you could make up. Now we were rolling off the miles seemingly effortlessly in :45...track speed. Soon the scanner squawked "approach" and we slowed to a crawl as we neared Calverton. I scooted across the aisle and got a not-very-memorable shot of P42 #157 leading the regional toward Kemper Street.

Back up to speed a few miles, then we eased up again, this time for Manassas. I heard VRE #313 say he was in the clear, heading to the facility at Broad Run. George was waiting as I descended the steps. I was able to quickly introduce him and Conductor Hoffman, photographer and subject, at the same location where the timetable cover image was shot. It was even the same train, #50, though the timetable mistakenly called it the Regional. They shook hands, exchanged some information, then Conductor Huffman ascended the steps into the stainless tube for the final leg of his journey into Alexandria and DC.

A busy day for N&W 611 at Lynchburg - We in the Lynchburg area have been very fortunate to have had N&W Class J 611 visit our fair city numerous times this year. On April 9 611 and its train spent three hours in town as the end point of a round trip from Spencer, NC, its first excursion of the 2016 season. Between 800 and 900 riders had a chance to browse downtown locations while the train was turned and serviced. Then on May 7 and 8 Lynchburg was once again a 611 destination, this time from Roanoke, although no time was spent in town, other than the time it took to turn the train and then depart.

June 1 was a bit different, however. On that day 611 made a ferry run from Roanoke to Manassas to get the train in place for Manassas-Front Royal round trips on June 4 and 5. What made the day special was the fact that 611 had to stop at Lynchburg's Kemper Street station to pick up five additional private cars to fill out the train's consist before continuing on to Manassas.



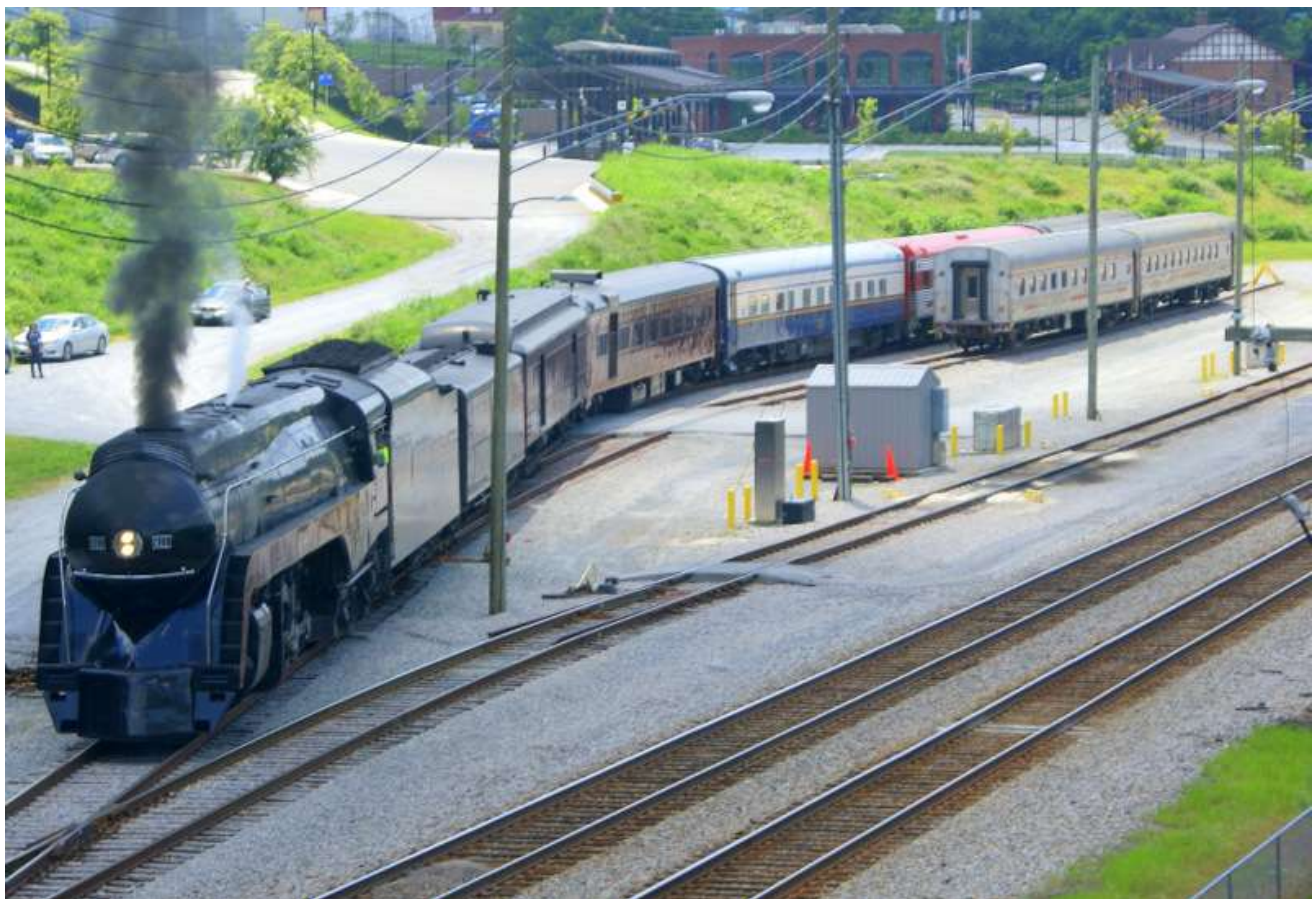


The five cars had been brought to Lynchburg one by one on different days on the rear of Amtrak's Regional service, and were stored in the two stub-end tracks adjacent to the track on which the Regional is serviced each night. Three premium-service cars, the NYC 43, the J. Pinkney Henderson, and the Berlin, occupied one track. Two coach cars belonging to the Washington

DC Chapter of the NRHS, the Franklin Inn and the Collinsville Inn, were stored on the other stub track. See above.

A similar move was made last year, however, only three cars were picked up then, and those three cars were added to the rear of the train. See right. What made this year's move noteworthy was that, unlike last year's move, 611 itself had to enter the small yard to do its pick-up work. Correct me if I'm wrong, but I'm sure 611 had so many cars trailing last year that it remained on the main line while accomplishing its task.

So pictured below is an image of 611 inside the yard picking up the first cut of cars. An historic moment in Lynchburg rail history in my humble opinion.



Following the weekend trips out of Manassas 611 made one more visit to Lynchburg as it deadheaded south on June 6. Your Editor was fortunate enough to have been given a ride on the move. The train left Manassas about 9:20 a.m. and proceeded without delay as far as Tye River where it waited for two northbound trains to pass, mixed freight 12R, as seen to the right, and ethanol train 64A.

611 then proceeded south to Mclvor where it waited for two more northbounds to pass, intermodal train 214 and mixed freight 36Q. Seen below is 36Q's crew greeting 611's crew as the two pass each other.



611 arrived at Kemper Street station, seen below, at 4:50 p.m. and a stop was made to let those with cars parked at the station to getoff. The train then proceeded south to Montview Yard where the train was store for the night. On Tuesday the 611 and a small consist continued south to Spencer, NC. The majority of the passenger cars were sent to Fort Wayne, IN, to be used with some upcoming NKP 765 trips.



Left: 611 sits behind Kemper Street as a handful of riders detrain. Maintenance of Way hi-rail truck passes by. M of W forces have been busy replacing bridge ties on Main Two on the Blackwater Creek trestle this month.

JUNE 2016 BLUE RIDGE DISPATCHER INFORMATION from President Rick

WELCOME NEW BRC MEMBER -The Blue Ridge Chapter would like to welcome John Gardner back to its membership!!!

2016 PROGRAMS NEEDED - The meetings of September 14th and December 14th are still available if you would like to present a program

Please keep Dale Diacont's wife, Audrey, in your thoughts and prayers.

Lynchburg Rail Day 2016 Vendor Registration Form
Please return this portion with your info and payment, OR free table acceptance

Your Name or Your Business Name: _____

Name Of Person To Contact w/ Business: _____

Address: _____ City: _____

State: _____ Zip: _____

Daytime Phone Number w/ Area Code: _____

Evening Phone Number w/Area Code: _____

Cell Phone Number w/ Area Code: _____

Business Phone Number w/ Area Code: _____

Fax Number w/ Area Code: _____

E-mail Address: _____

Website address: _____

Number of 6ft. Tables: ____ X \$25.00 = _____ Total

Number of 8ft. Tables: ____ X \$33.00 = _____ Total

One Free 5ft. Round Table available to railroad related historical societies, museums and preservation organizations. Circle "Yes" here if your organization is attending.

NOTE: These organizations can purchase extra 6ft. or 8ft. Tables and still get a free table of the same size purchased instead of a 5ft. Round table. All of your tables will be in the same area. Please make the total amount of your check or money order made payable to the Blue Ridge Chapter, NRHS. Thank you for helping the BRC,NRHS preserve railroad history through our annual donations to regional railroad projects!

Electricity: Circle Yes/No, No extra charge if available. First come, first serve basis.

Special Needs or Requests: _____

Please make checks payable to the Blue Ridge Chapter, NRHS. Mail your payment to John Tanner, Treasurer Blue Ridge Chapter, NRHS, 209 Pocahontas Drive, Forest, Virginia 24551-1235. If you have any questions please call our Table Registrar John Tanner at 434-316-9500 between 9:00 am and 5:00 pm Monday through Friday or email John at flytrains@yahoo.com . If you need extra assistance you can email our LRD 2016 Train Show Chairman: Barry Moorefield at rockdalefarm@live.com . Phone 434-821-2174 before 9:00 pm.

Vendor Table Agreement: Note: Agreement Must Signed In Order to Rent Any Tables
By signing this form, I recognize that I am responsible for the security of the items that I bring to offer for sale. The Blue Ridge Chapter, NRHS and/or the Boonsboro Ruritan Club organization are not responsible for lost or stolen items. The Blue Ridge Chapter will make every reasonable effort to keep the hall secure for your items as well as ours.

Important Option: I would like my contact information shared with other model train/railroadiana show promoters so they may contact me. Yes ____ No ____

Signed: _____

2016 CHAPTER OFFICERS AND STAFF

President	Rick Johnson, 104 Mowry Ln. Lynchburg, VA 24502 434-660-1113 notch8@aol.com
Vice President	Gale McKinley, 1186 James View Dr. Lynchburg, VA 24503 434-907-1886 mckingc@yahoo.com
Secretary	E. Norris Deyerle, Jr. 744 Chinook Pl. Lynchburg, VA 24502 434-237-4912 railcow@msn.com
Treasurer	John Tanner, 209 Pocahontas Dr., Forest, VA 24551-1235 434-525-1318 flytrains@yahoo.com
National Representative	Bob Leslie 3844 Peakland Pl. Lynchburg, VA 24503 434-384-9062 lckawanna@aol.com
Editor	Garland R. Harper, 3920 Harbor St. Lynchburg, VA 24503 434-384-7210 GRHarper@aol.com
Historian	Rick Johnson, 104 Mowry Ln. Lynchburg, VA 24502 434-660-1113 notch8@aol.com
Webmaster	John Siegle 1225 Krise Cir. Lynchburg, VA 24503 434-384-6951 jas65@comcast.net
BRC Chairman. VA Rail Heritage Region Partners	E. Norris Deyerle, Jr. 744 Chinook Pl. Lynchburg, VA 24502 434-237-4912 railcow@msn.com
Rail Day Chairman	Barry Moorefield 434-821-2174 rockdalefarm@live.com

The BLUE RIDGE DISPATCHER is published by the Blue Ridge Chapter, National Railway Historical Society. Opinions expressed are those of the editor and contributors and do not necessarily reflect the views of the Blue Ridge Chapter or the National Railway Historical Society unless otherwise stated.

**Blue Ridge Chapter, NRHS
P. O. Box 11731
Lynchburg, VA 24506-1731
www.blueridgenrhs.org**